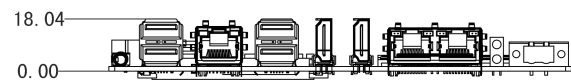
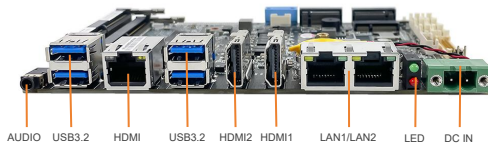
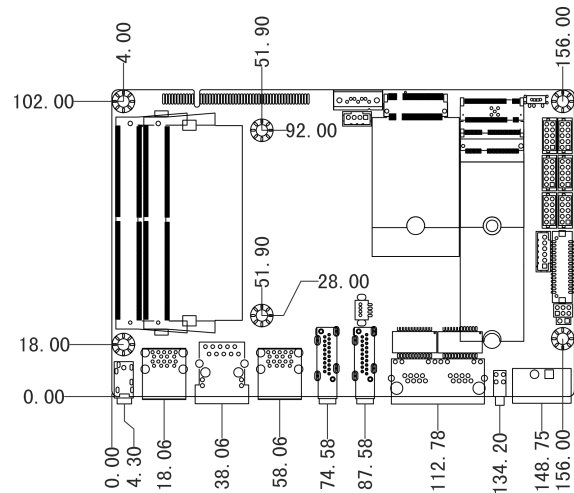
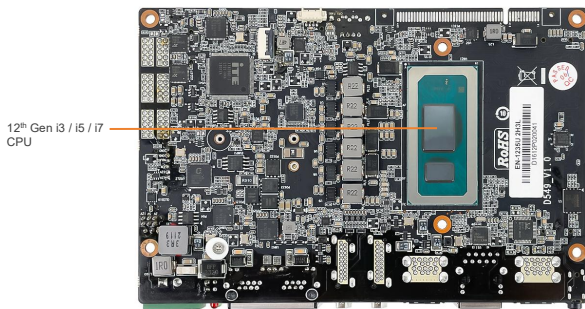
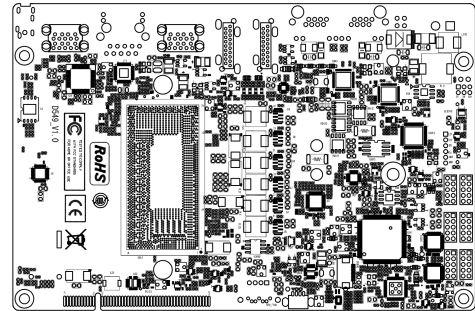
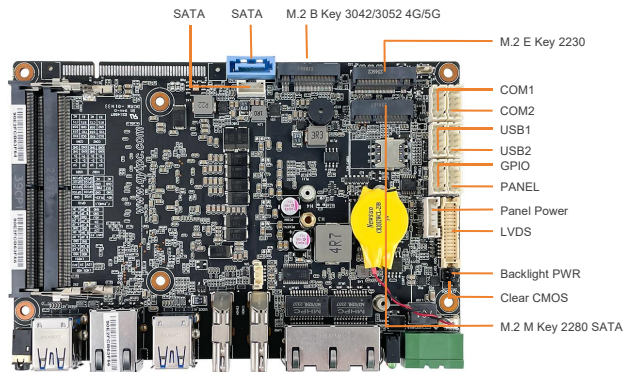


Features

- 12th Gen Intel® Whiskey Lake Core™ i3 / i5 / i7, TDP 15W
- 1 x DDR5 4800MHz SODIMM, MAX 64GB
- 1 x 2.5 SATA HDD, 1 x M.2 2280 SATA SSD
- 1 x M.2.0 (2230, Wifi+BT), 1 x M.2.0 (3042/3052, 4G/5G)
- Supports dual independent display: 1 x HDMI, 1 x DP, 1x LVDS
- 3 x Intel® 226-V 2.5GbE Ethernet, support WoL and PXE
- 2 x COM (RS232/422/485), ESD and Surge Protection
- Support TPM2.0 hardware security
- 9V to 36VDC Wide Range Power Input, Supporting OVP / OCP / RPP

I/O Layout



Specifications

System	CPU	12th Gen Intel® Core™ i3-1215U 1.2GHz / i5-1235U 1.3GHz / i7-1255U 1.7GHz
	L2 Cache	10MB / 12MB / 12MB
	TDP	15W
	Chipset	Integrated with Intel® SoC
	BIOS	AMI UEFI BIOS
	Watchdog Timer	Software Programmable Supports 1~255 sec. System Reset
	TPM	TPM 2.0
Memory	Technology	Single Channel (Non-ECC) DDR5L 4800MHz, up to 64GB
	Slot	1 x DDR5 SO-DIMM Slot
Storage	SATA	1 x SATA3.0 Port
	M.2	1 x M.2-2280 M Key SSD Slot
Graphic	Controller	Intel® UHD Graphics / Intel® Iris® Xe Graphics
Audio	Codec	Realtek ACL897 Audio controller
Display I/F	Display	1x DP1.4, Max Resolution up to 4096x2160@60Hz
		2x HDMI, Max Resolution up to 4096x2160@30Hz
External I / O	Ethernet	1x GbE1: Intel I226V 2.5GbE LAN PXE Support
		1x GbE2: Intel I226V 2.5GbE LAN PXE Support
		1x GbE3: Intel I219V 1.0GbE LAN PXE Support
	USB	4x USB 3.2 Gen2x1 (5Gbps), Type A
	Audio	1x Audio_out & Mic_in
Indicators	1x SATA LED(Red), 1x Power LED(Green)	
Internal I/O	M.2	1*M.2 (Key-E, 2230, PCIe+USB, Wifi+BT)
		1*M.2 (Key-B, 3042/3052, PCIe/ USB 3.0+USB2.0, 4G/5G)
		1*M.2 (Key-M, 2280, NVMe/ SATA, SSD)
	GPIO	1x 8bit GPIO(2*5pin)
	USB	2x USB2.0 wafer(2*5pin)
	COM	2x RS232/422/485 wafer(2*5pin)(COM1/COM2)
	CPU	1x CPU-FAN (1*4pin)
	SPK	1x SPK 2W8Ω wafer (1*4pin)
	PANEL	1x Panel Connector (2*5pin)
	Invertor	1x 12V/5V/3V Selectable
SIM Slot	1x SIM Socket	
Power	Power Mode	Support AT, ATX Mode
	Power Supply Voltage	DC IN 9~36V
	Power Connector	1x 2-pin Phoenix Terminal Block
	Power Protection	OVP (Over Voltage Protection) OCP (Over Current Protection) RPP (Reverse Polarity Protection)
Operating System	Windows	Windows 10/11 IoT Enterprise
	Linux	Linux
Physical	Dimensions	160mm x 106mm
	Weights	0.3kg
Environment	Operating Temperature	-20°C ~70°C, 10 ~90%(non-cpmdensing)
	Storage Temperature	-40°C ~80°C, 10 ~90%(non-cpmdensing)
	Certification	CE/FCC Class A