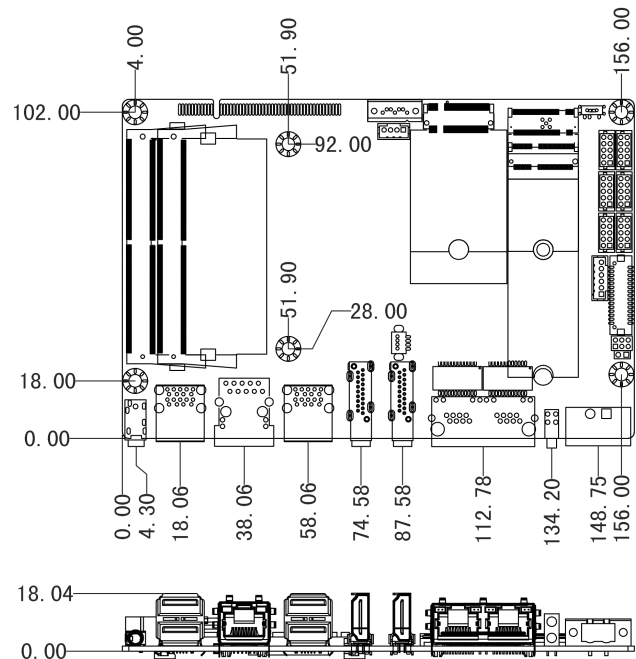
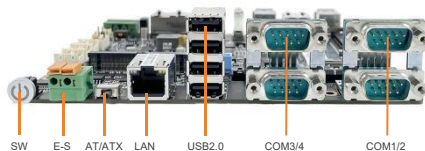
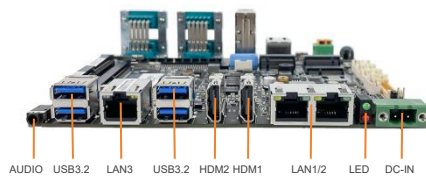
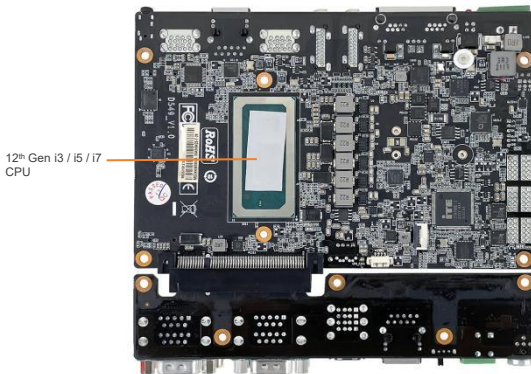
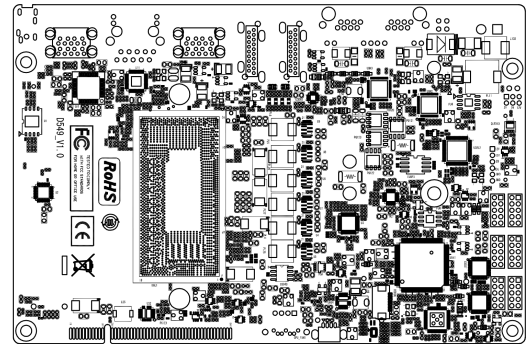
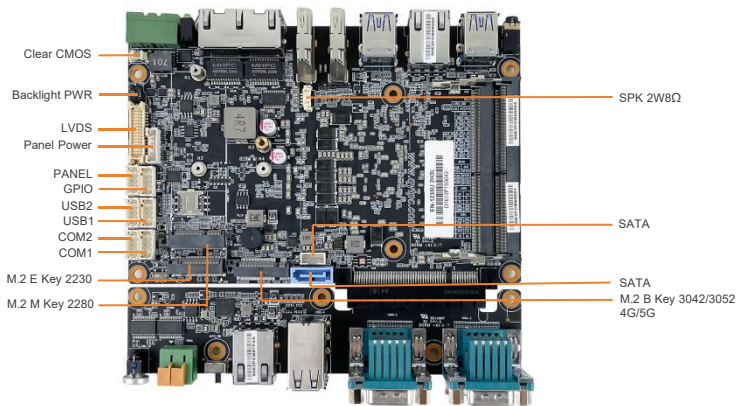


## Features

- 12th Gen Intel® Whiskey Lake Core™ i3 / i5 / i7, TDP 15W
- 1 x DDR5 4800MHz SODIMM, MAX 64GB
- 1 x 2.5 SATA HDD, 2 x M.2 2280 SATA SSD
- 1 x M.2.0 (2230, Wifi+BT), 1 x M.2.0 (3042/3052, 4G/5G)
- Supports dual independent display: 1 x HDMI, 1 x LVDS
- 4 x Intel® 226-V 2.5GbE Ethernet, support WoL and PXE
- 6 x COM (2x RS232/RS422/RS485), ESD and Surge Protection
- Support TPM2.0 hardware security
- 9V to 36VDC Wide Range Power Input, Supporting OVP / OCP / RPP

## I/O Layout



## Specifications

<b>System</b>	CPU	12th Gen Intel® Core™ i3-1215U 1.2GHz / i5-1235U 1.3GHz / i7-1255U 1.7GHz
	L2 Cache	10MB / 12MB / 12MB
	TDP	15W
	Chipset	Integrated with Intel® SoC
	BIOS	AMI UEFI BIOS
	Watchdog Timer	Software Programmable Supports 1~255 sec. System Reset
	TPM	TPM 2.0
<b>Memory</b>	Technology	Single Channel (Non-ECC) DDR5L 4800MHz, up to 64GB
	Slot	1 x DDR5 SO-DIMM Slot
<b>Storage</b>	SATA	1 x SATA3.0 Port
	M.2	2 x M.2-2280 M Key SSD Slot
<b>Graphic</b>	Controller	Intel® UHD Graphics / Intel® Iris® Xe Graphics
<b>Audio</b>	Codec	Realtek ACL897 Audio controller
<b>Display I/F</b>	Display	1x DP1.4, Max Resolution up to 4096x2160@60Hz
		2x HDMI, Max Resolution up to 4096x2160@30Hz
<b>External I / O</b>	Ethernet	1x GbE1: Intel I226V 2.5GbE LAN PXE Support
		1x GbE2: Intel I226V 2.5GbE LAN PXE Support
		1x GbE3: Intel I226V 2.5GbE LAN PXE Support
		1x GbE4: Intel I219 1.0GbE LAN PXE Support
	USB	4x USB 2.0 (480Mbps), Type A
		4x USB 3.2 Gen2x1 (5Gbps), Type A
	COM	2x COM 1, COM 2 ( RS-232 / 422 / 485, Adjustable through BIOS )
		2x COM 3, COM 4 ( RS-232 )
	Audio	1x Audio_out & Mic_in
	Indicators	1x SATA LED(Red), 1x Power LED(Green),
Remote Power On/Off	1x Remote SW	
Power Button	1x Power Button	
<b>Internal I/O</b>	M.2	1*M.2 ( Key-E, 2230, PCIe+USB, Wifi+BT )
		1*M.2 ( Key-B, 3042/3052, PCIe/ USB 3.0+USB2.0, 4G/5G )
		2*M.2 ( Key-M, 2280, NVMe/ SATA, SSD )
	GPIO	1x 8bit GPIO(2*5pin)
	USB	2x USB2.0 wafer(2*5pin)
	COM	2x RS232/422/485 wafer(2*5pin)(COM1/COM2)
	CPU	1x CPU-FAN (1*4pin)
	SPK	1x SPK 2W8Ω wafer (1*4pin)
	PANEL	1x Panel Connector (2*5pin)
SIM Socket	1x SIM Socket	
<b>Power</b>	Power Mode	Support AT, ATX Mode
	Power Supply Voltage	DC IN 9~36V
	Power Connector	1x 2-pin Phoenix Terminal Block
	Power Protection	OVP ( Over Voltage Protection )   OCP ( Over Current Protection )   RPP ( Reverse Polarity Protection )
<b>Operating System</b>	Windows	Windows 7 / 8 / 10 IoT Enterprise
	Linux	Linux
<b>Physical</b>	Dimensions	160mm x 106mm
	Weights	0.3kg
<b>Environment</b>	Operating Temperature	-20°C ~70°C, 10 ~90%( non-cpmdensing )
	Storage Temperature	-40°C ~80°C, 10 ~90%( non-cpmdensing )
	Certification	CE/FCC Class A