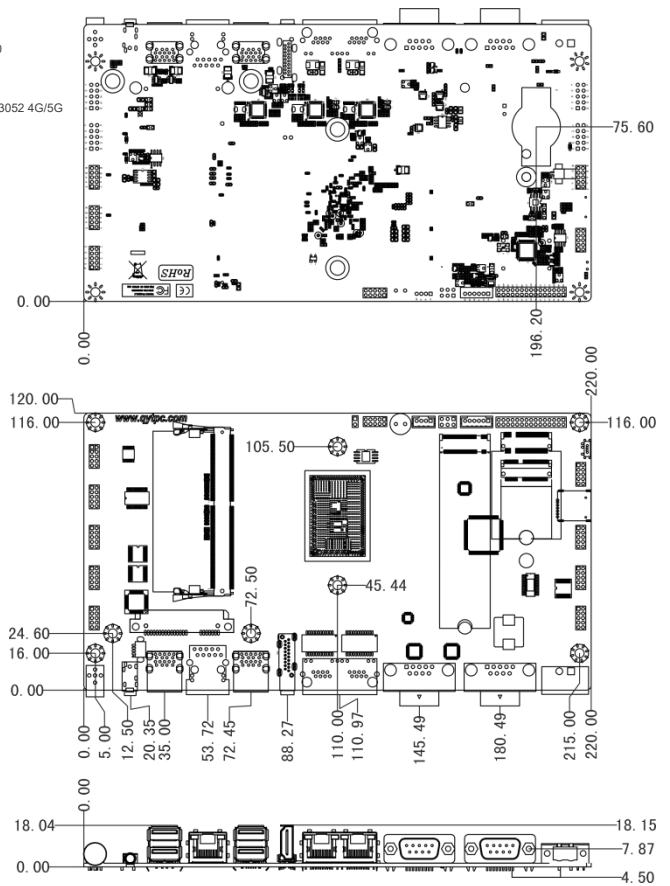
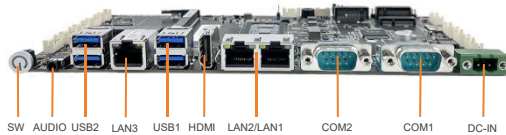
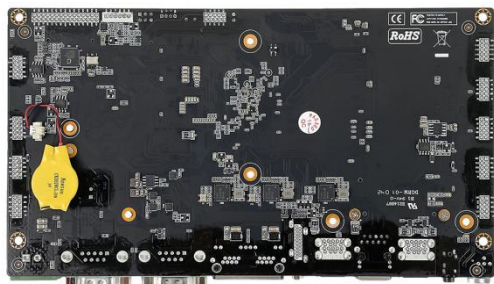
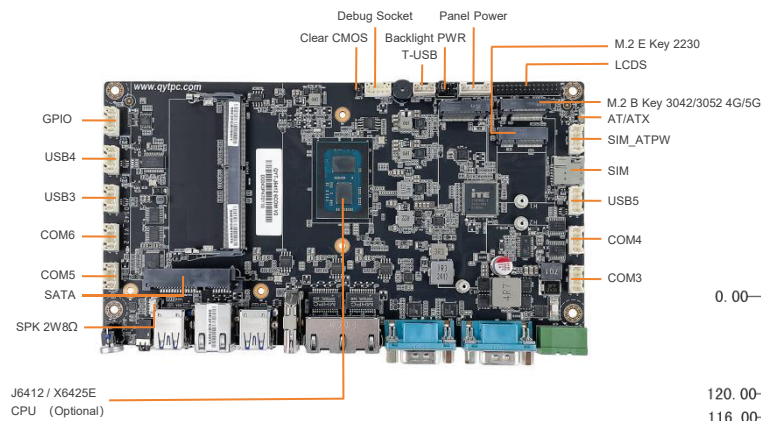


Features

- Intel® Celeron® J6412 Quad-core 2.0 GHz, TDP 10W
- 1 x DDR4 3200MHz SODIMM, MAX 32GB
- 1 x 2.5 SATA HDD, 1 x M.2 2280 SATA SSD
- 1 x M.2.0 (2230, Wifi+BT), 1 x M.2.0 (3042/3052, 4G/5G)
- Supports dual independent display: 1 x HDMI, 1 x LVDS
- 3 x Intel® 226-V 2.5GbE Ethernet, support WoL and PXE
- 6 x COM (2x RS232/RS422/RS485), ESD and Surge Protection
- Support TPM2.0 hardware security
- 9V to 36VDC Wide Range Power Input, Supporting OVP / OCP / RPP

I/O Layout



Specifications

System	CPU	Intel® Elkhart Lake Celeron J6412 2.0GHz	Intel® Elkhart Lake Atom X6425E 2.0GHz
	L2 Cache	1.5MB	1.5MB
	TDP	10W	10W
	Chipset	Integrated with Intel® SoC	
	BIOS	AMI UEFI BIOS	
	Watchdog Timer	Software Programmable Supports 1~255 sec. System Reset	
	TPM	TPM 2.0	
Memory	Technology	Single Channel (Non-ECC) DDR4 3200MHz, up to 32GB	
	Slot	1 x DDR4 SO-DIMM Slot	
Storage	SATA	1 x SATA3.0 Port	
	M.2	1 x M.2-2280 M Key SSD Slot (SATA3.0 Signal)	
Graphic	Controller	Intel HD Graphics Integrated	
Audio	Codec	Realtek ACL897 Audio controller	
Display I/F	Display	1x HDMI, Max Resolution up to 4096x2160@30Hz	
		1x LVDS: Dual Channel 18/24-bit, up to 1920x1200	
External I / O	Ethernet	1x GbE1: Intel I226v 2.5GbE LAN PXE Support	
		1x GbE2: Intel I226v 2.5GbE LAN PXE Support	
		1x GbE3: Intel I226v 2.5GbE LAN PXE Support	
	USB	4x USB 3.2 Gen1x1 (5Gbps), Type A	
	COM	2x COM 1, COM 2 (RS-232 / 422 / 485, Adjustable through BIOS)	
	Audio	1x Audio_out & Mic_in	
	Power Button	1x Power Button	
Internal I/O	M.2	1x M.2 (Key-E, 2230, PCIe+USB, Wifi+BT)	
		1x M.2 (Key-B, 3042/3052, PCIe/ USB 3.0+USB2.0, 4G/5G)	
		1x M.2 (Key-M, 2280 SATA, SSD)	
	GPIO	1x 8bit GPIO(2*5pin)	
	USB	1x USB2.0 wafer(1*4pin)	
		6x USB2.0 wafer(2*5pin)	
	COM	4x RS232 wafer(2*5pin)(COM3/COM4/COM5/COM6)	
	Debug Socket	1x Debug wafer(2*5pin)	
	SPK	1x SPK 2W8Ω wafer (1*4pin)	
Invertor	1x 12V/5V/3V Selectable		
SIM Slot	1x SIM Socket		
Power	Power Mode	Support AT, ATX Mode	
	Power Supply Voltage	DC IN 9~36V	
	Power Connector	1x 2-pin Phoenix Terminal Block	
	Power Protection	OVP (Over Voltage Protection) OCP (Over Current Protection) RPP (Reverse Polarity Protection)	
Operating System	Windows	Windows10/11 IoT Enterprise	
	Linux	Linux	
Physical	Dimensions	220mm x 120mm	
	Weights	0.5kg	
Environment	Operating Temperature	-20°C ~70°C, 10 ~90%(non-cpmdemsing)	
	Storage Temperature	-40°C ~80°C, 10 ~90%(non-cpmdemsing)	
	Certification	CE/FCC Class A	